

Sound Rowers presents:
The world famous

Peter Marcus Rough Water Race

2024



Notice

This presentation will cover important aspects of the race. There will be an official Race Meeting at 9:15 on the morning of the race. If you have specific questions they can be answered by emailing the race director

Race Information

- Date: **March 16, 2024**
 - Start: **10:00 AM**
 - Distance:
**10 miles long course,
5 miles short course**
 - Location: **Community
Boating Center,**
Fairhaven Boat Launch
 - Conditions may be
extreme. Be prepared
for ROUGH WATER!
- Race Director: **Kevin Olney**
 - text: **360-220-0247**
 - email: olneykc33@gmail.com

Sponsors and Thanks

- **Community Boating Center**
- **Pacific Multisports**
- **Pacific North Sports**
- **Giant Fish**
- **Elysian Brewing**
- The amazing Bellingham Paddling community!!



More Thanks!

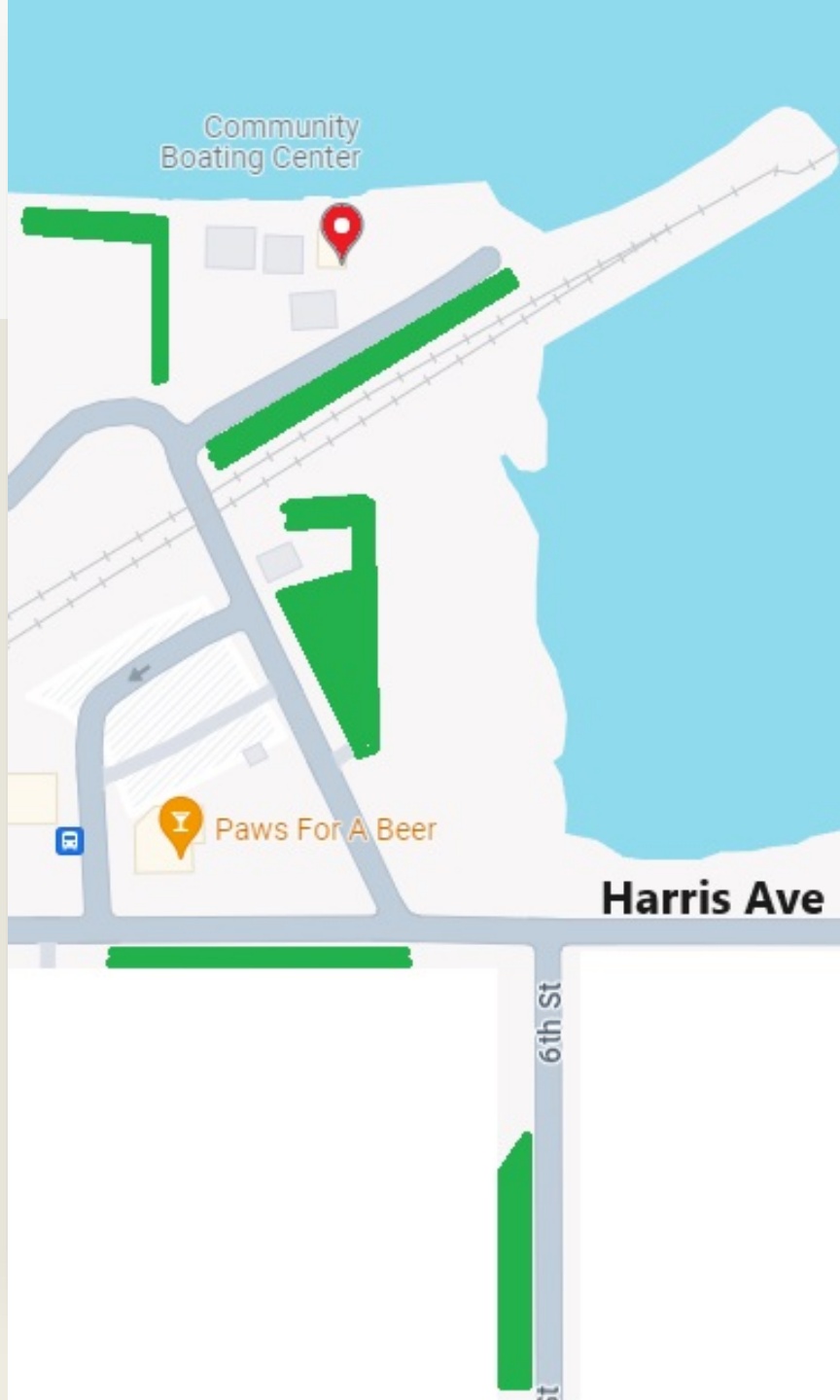
- **Prime Sports Institute**
- **Kite Paddle Surf**
- **Elastic Laser**
- **Michael Lampi Photography**
- And the Volunteers and Safety Crews!!



Directions to the Start

- Take I-5 exit 250, head West, continue through the light on 12th Street
- Follow the 90 degree curve to the right, continue until you come to Harris Avenue.
- Turn left, approximate 1/2 mile down Harris, turn right into Fairhaven Trailer Launch Parking.

Community Boating Center
555 Harris Ave
Bellingham, WA 98225



Parking

Green: Parking

Attendants in orange vests will be on hand to direct you to available spaces

Orange X: Check-in

All-racer check in and same-day registration will be in the CBC work shed

Check-in Procedure

Visit the CBC work shed

Confirm your boat class and
course length Pick up your
race number



Boat Requirements

- Your boat must be safe, seaworthy and appropriate for open water. Flatwater kayaks, racing shells and open canoes may be prohibited based on conditions
- Race number to be fixed securely to the top of bow or stern. Duct tape will be provided



Personal Requirements

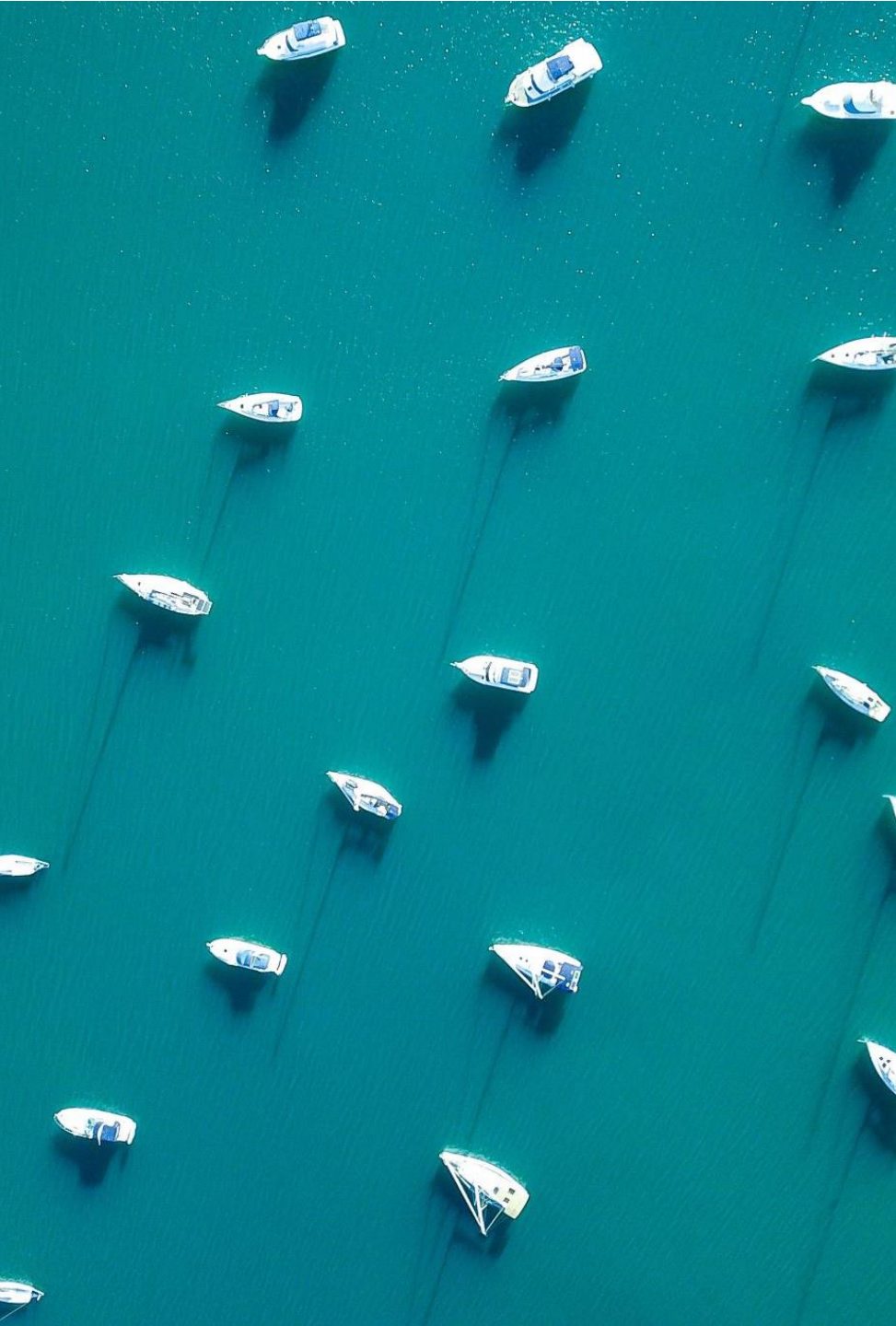
- You must have a Coast Guard approved PFD on board your vessel
- You must carry a noisemaking device such as a whistle or horn
- You must be capable of self-rescue in any conditions that may be present on race day
- Surfskis, Outrigger Canoes and Stand-up Paddleboards must have a functional leash attaching paddler to craft
- Failing to meet these requirements will result in disqualification from the race

Where and When to Launch

There is limited access to the water, launch early and be courteous of other racers

Warm up on the water at any time before the race but stay clear of the start line.

Leave boat launch free for larger rowing vessels. Smaller craft can use the beach to the right of the ramp



Start Sequence

Mass Start: All Classes, All Distances

- 9:55 – 5 short blasts: alert
- 9:59 – 2 short blasts: 1 minute
- 10:00 – 1 long horn: Go!

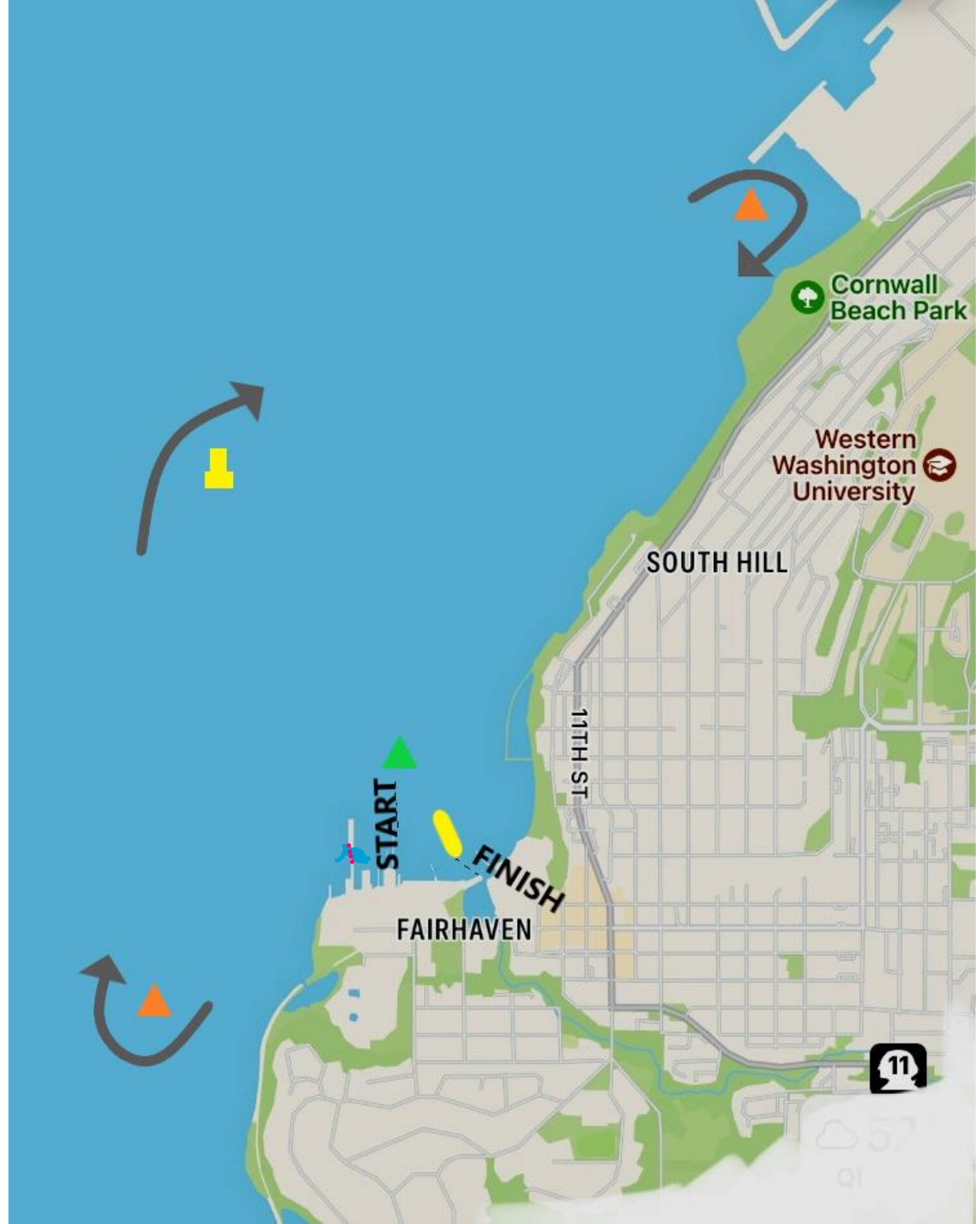
Race Course

Start is between the **Alaska Ferry Dock** and the **Green Inflatable** Buoy

- Head SW to an **Orange Inflatable BNP** Buoy near Marine Park
- Head North to the **Yellow Outfall Buoy**
- Head NW to an **Orange Inflatable BNP** Buoy near Cornwall Beach
- Head South along the shoreline
- (Long Course: Round the **Green Inflatable** Buoy and continue to 2nd lap)
- Finish is between the Permanent **Yellow Buoy Line** and the CBC office
(Sharp right turn to cross the finish line)



Course Map



Long Course
continue to
2nd lap

11TH ST

CBC

FINISH





Time Limit

- Long course racers must complete the first lap within one hour of the start
- Please respect our safety crews and volunteers 😊



Finish through the brightly colored gate at the end of the yellow buoy line

(Sharp right turn to the finish line.)




Dangers

- **Currents may be present.** Be cautious around buoys, piers and navigational markers
- **Watch for commercial and recreational boaters.** Give room to any vessels you encounter
- **Winds can increase suddenly.** Be prepared for Rough Water!

Safety

- PFD and whistle are required
- You must have the ability to self-rescue
- Surfskis, OCs and SUPs must have a securely attached leash
- High visibility clothing is recommended
- Please carry a VHF radio and/or cell phone in a waterproof bag
- Use good and honest judgement about your abilities and the conditions present

Safety, continued

- You are obligated to aid any racers in distress. Be sure they are in their boat and underway before leaving them. You will be credited for time spent assisting
 - If you require assistance, signal one of the 4 safety boats by waving your hand, paddle or oar over your head
 - If race is cancelled AFTER the start, safety boats will blow their horns repeatedly and direct racers to shore
- 
- A large yellow triangle is positioned in the bottom right corner of the slide, pointing towards the top right.



Whales

If you encounter a
Southern Resident Killer
Whale you must maintain
400 yards distance

At the Finish

- Your finish will be signaled from the shore
- **Please keep clear of the finish line after you have completed the race**
- Return your race number and head to the shelter for lunch and awards

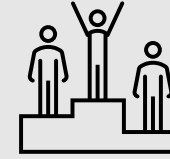


Lunch

- We will be serving soups and cookies to refuel you after the event
- Please inform the servers of any food allergies or restrictions



Grand Barnacle
Award*



- Ribbons will be presented to the top three finishers in each category
- Special laser-cut awards will be given to the top overall Female, Male and Mixed finishers
- Awards By: **Elastic Laser**

*The Grand Barnacle of the Bay trophy will be presented to the fastest Bellingham paddler, 70 years of age or older in the long course

A close-up, low-angle shot of three black rowing oars in motion, splashing through choppy water. The oars are arranged diagonally from the bottom left towards the top right. The water is splashing upwards, creating a misty, sunlit effect. The background is a bright, overexposed sky.

Thank You!

We appreciate your
participation in this Sound
Rowers event

Thank you for continuing the
legacy of fun and
competitive racing